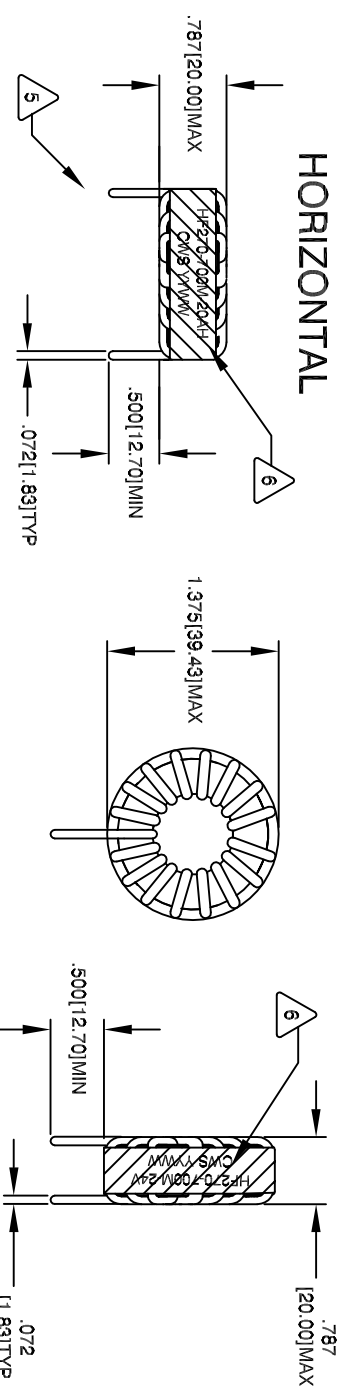


The information contained in this drawing is the sole property of CMS Coil Winding Specialist. Any reproduction in part or whole without written permission of CMS Coil Winding Specialist is prohibited.

REVISION HISTORY			
REV	ECON	DESCRIPTION	SIGN & DATE
			BY DATE CHK DATE
B		INITIAL RELEASE	TKK 2/9/04 JLUU 2/9/04
C		CORRECT DIMENSIONAL TOLERANCE	KLG 9/7/10 MK 9/7/10



7 BUILD TO ROHS COMPLIANCE

6 USING A PERMANENT MARKING METHOD MARK PART NUMBER AND REVISION, IF APPLICABLE WRAP INDUCTOR WITH 3M # 79 OR EQUAL

5 TO THE CORE MUST REST FLAT ON PCB; LEADS MUST BE TANGENT FLUSH WITH THE COIL EDGE, AS SHOWN (I.E. COIL REMOVE INSULATION AND TIN LEADS 0.50 INCH

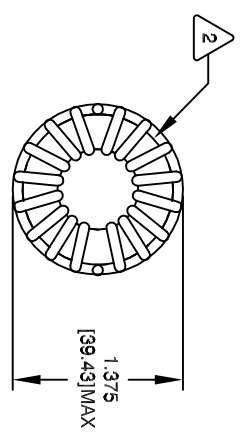
4 WIND COILS EVENLY SPACED AROUND THE CORE CONSTRUCTION:

3 THESE SPECIFICATIONS ARE BASED ON LOW RIPPLE CURRENT WEIGHT: ~ 58 GRAM RECOMMENDED OPERATING TEMP: -40°C-125°C HI-POT TEST FOR WINDING TO CORE ISOLATION = 1250 VDC 5 SEC CURRENT RATING: .20 AMPS, 40 °C TEMP. RISE, NO AIR FLOW DCR = 8.0 MILLI-OHMS MAX. INDUCTANCE @ 20.0 AMP ~ 29 UH (LESS THAN 10% RIPPLE) INDUCTANCE @ 10.0 AMP ~ 56 UH (LESS THAN 10% RIPPLE) INDUCTANCE = 70 UH ± 15% @ LOW DC BIAS, 1 KHz, 250mV SPECIFICATIONS:

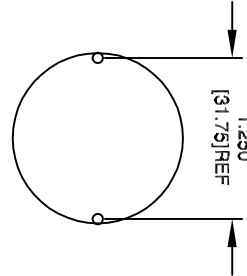
2 WIRE: UL RECOGNIZED 200°C RATED MAGNET WIRE CWS BYTE/MARK OR OTHER APPROVED PART CORE: POWDERED TOROIDAL CORE

1 RATING CLASS F (155°C MIN.) REQUIRED MATERIAL: UL RECOGNIZED 94V-0 FOR FLAMMABILITY

NOTES: UNLESS OTHERWISE STATED, READ NOTES FROM BOTTOM UP



BOTTOM VIEW



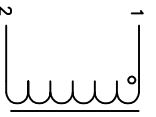
MOUNTING HOLES PATTERN

FRONT VIEW

FRONT VIEW

VERTICAL

SIDE VIEW



SCHEMATIC

CODE	MFG. P/N	DESCRIPTION	ITEM NO.
AUTOCAD	X		
SOLIDWORKS			
SIGN	DATE	PARTS LIST	
TKK	2/9/04	CWS Coil Winding Specialist.	
JLUU	2/9/04	353 W Grove Ave	
KSJLM	2/9/04	Orange, CA 92865	
JLUU	2/9/04	TITLE: POWER INDUCTOR	
		70 UH, 20 Amp	
SIZE	DWG. NO.	SCALE	REV
B	HF270-700M-20A	2=1	C
DO NOT SCALE DRAWING			